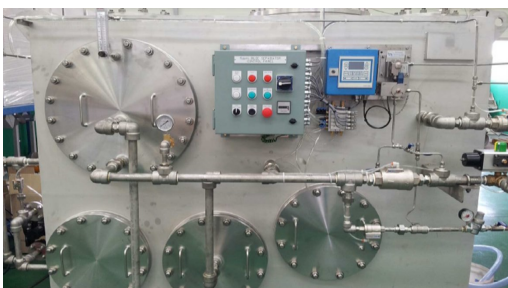


Filterless operation and the only separator capable of removing dissolved contaminants, it was designed for the rigors of the oil field and is a land based two phase oily water separation unit, like the Crystal Sea, requires no filter and with no internal moving parts is designed to run 24 hours a day in the harshest environment. Crystal can keep up with the most aggressive production quota's and never gives up. Our separators are designed to run non stop 24/7. Ten years of continuous operation is not too demanding, Crystal can handle any production schedule you throw at it. Each stage is devised to quickly remove oil particles of a certain size and to render the liquid cleaner for the next stage. Furthermore, it also precludes undue contamination and clogging of various stages by oil, resulting in trouble-free and inexpensive automated operation. There are no limitations on oil particle size, and Crystal quickly separates emulsions and oils with very high densities. Our separator has an ultra compact footprint and is incredibly versatile. It is extremely customizable and can be utilized in a wide range of applications such as sand washing plants, oil platforms, wastewater treatment plants and salt mines. We encourage you to visit one of our units in the field and look forward to custom building any size for your specific applications.



MU-30 (Stainless Steel Model)



Genoil Inc.

1230 Avenue of The America's
New York City, NY 10020

www.genoil.ca



Crystal™ Oily Water Separator



Separation without filters

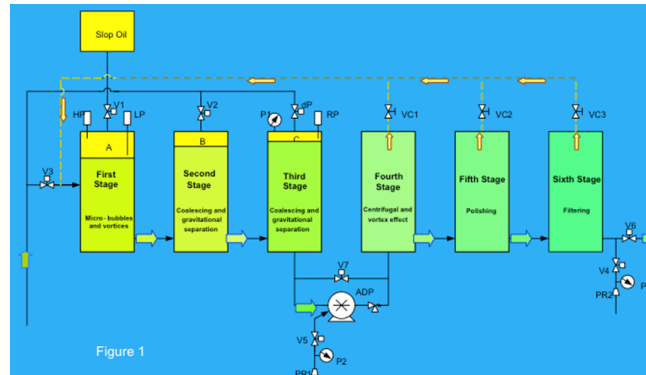
www.genoil.ca

Advantages

- Low power consumption with highly efficient design.
- Purifying consistently less than 10 ppm before filters under real world conditions without the need for emulsion breaking units or polishing units.
- No costly filters required.
- Handles a wide range of densities with no limitation on oil particle size.
- Unaffected by chemicals or detergents.
- Coast Guard and ABS Certified IMO MEPC 107 (49) compliant. Did not exceed 5ppm even with 100% oil influent.
- Extremely compact, front side access for ease of installation. Easily transported.
- Designed for continuous automated predictable operation.
- The lowest maintenance and operating costs in the industry. 30 units currently operating trouble free for years in various locations.
- Outstanding reliability. Has no internal moving parts & does not require internal maintenance or cleaning
- Patented & proven design manufactured & supported by Donghwa Entec of Busan Korea.
- Optional 5 ppm bilge alarm and Explosion proof (Class1, Div. 1).



Process Flow Diagram



Stage 1 : Tangential Acceleration, Gravitational & Micro Bubbles

Stage 2 : Coalescing & Gravitational Separation

Stage 3 : Surface Tension (Oleophilic beads)

Stage 4 : Centrifuge & Vortex Effect

Stage 5 : Polishing

Stage 6 : Filtering (Marine Applications)



Separator Models

Weight (kg)	150	365	450	900	1250	1350	2200
Electric Power KW	0.1	0.25	0.5	0.75	1	1.5	3
Oil Outlet (in)	3/8	1/2	3/4	3/4	3/4	1	1 1/2
Effluent Line (in)	3/8	1/2	3/4	3/4	3/4	1	1 1/2
Inlet Line (in)	3/8	3/4	3/4	1	1	1 1/4	2
Height (mm)	550	945	1200	1415	1791	1791	2200
Depth (mm)	230	485	660	780	900	900	1200
Length (mm)	600	980	1140	1680	2080	2080	2500
Max Capacity (liters/hr)	250	500	1000	2000	3000	5000	10000
Model	MU 2	MU 5	MU 10	MU 15	MU 20	MU 30	MU 40

